



Daily Forecast

Northeastern Meteorological Center (Lower Part)

Meteorological Department

Ubon Ratchathani

http://www.ubonmet.tmd.go.th

Ministry of Digital Economy and Society

Tel.045-244189 Fax. 045-244200

e-mail: forecast_ubon@metnet.tmd.go.th

Daily Weather Forecast Distribution On Sunday, June 24, 2018

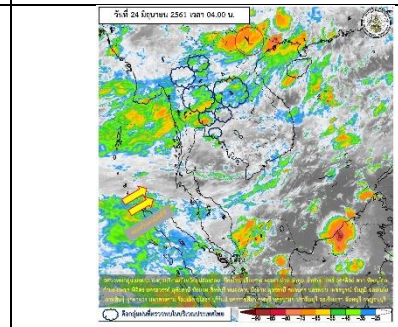
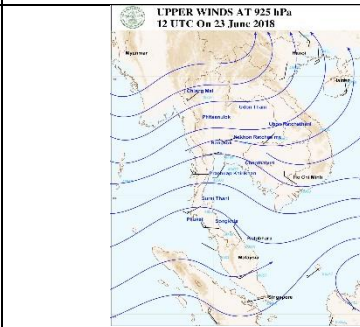
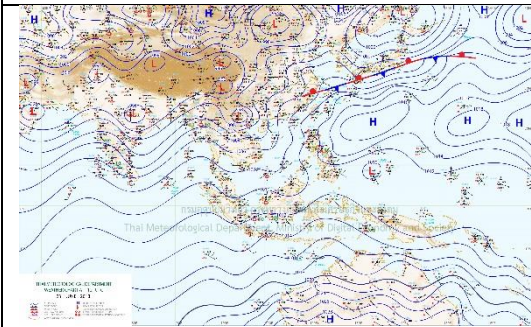
General Situation at 04.00 A.M.

The moderate southwest monsoon prevails across the upper Andaman Sea, and the Gulf of Thailand while the low pressure covers upper Vietnam. More rain is forecast for the Lower Northeast.

Weather Chart at 07.00 p.m.


Upper wind at 600 m. at 07.00 p.m.

Satellite Images at 04.00 a.m.



Forecast From 06.00 A.M. Today to 06.00 A.M. Tomorrow

Observations data in the past 24 hours.

	<p>The lower Northeastern Thailand</p> <p>Scattered thundershowers mostly in Amnat Charoen, Si Sa Kat, and Ubon Ratchathani. Minimum temperature 24-26 °C. Maximum temperature 31-35 °C. Southwesterly winds 10-30 km/hr.</p>	Provinces	Max. Temp.(°C)	Min. Temp.(°C)	Rain (mm)
	<p>Ubon Ratchathani</p> <p>Scattered thundershowers. Southwesterly winds 10-30 km/hr.</p> <p>Estimate Maximum temperature 34°C. Minimum temperature 25°C.</p>	Mukdahan	34.7	-	-
		Roi Et	35.4	-	-
		Yasothon	-	-	-
		Nakhon Ratchasima	35.6	-	-
		Buri Rum	35.5	-	-
		Surin	35.2	-	-
		Sri Saket	34.9	-	-
		Ubon ratchathani	35.0	-	-
		Amnatcharoen	-	-	-

Today at Hadkuduea Muang Distric **Sun Set 06.32 P.M.** **Tomorrow** at Phachanadai Khongjeam Distric **Sun Rise 05.29 A.M.**

Rainfall criteria (mm.)				Minimum temperature criteria (°C)				Maximum temperature criteria (°C)	
Light Rain	Moderate Rain	Heavy Rain	Very Heavy Rain	Cool	Moderately Cold	Cold	Very Cold	Hot	Very Hot
0.1-10.0	10.1-35.0	35.1-90.0	>90.0	16.0-22.9	16.0-17.9	8.0-15.9	<8.0	35.0-39.9	>39.9
The criteria for distribution of rain (Rain areas)					Tropical Storm criteria (The maximum wind speed near the Center)				
Isolated	Widely scattered	Scattered	Fairly widespread	Widespread	Depression		Tropical Storm		Typhoon
<20%	20-40%	40-60%	60-80%	>80%	<63 km/hr.		63-117 km/hr.		118 km/hr.

Pariwat Namduang
Forecaster

Thanawut Panjaponudomlap
Director of Northeastern Meteorological Center (Lower Part)